

Twickenham & Richmond TRIBUNE

Contents

- TickerTape
- TwickerSeal
- COVID-19
- Borough View
- The Missing Cod's Heads
- Marble Hill Marvels
- Heathrow Ruling
- River Crane Sanctuary
- Petitions
- Twickers Foodie Reviews
- Traveller's Tales- Gibraltar
- WIZ Tales - Christmas [Past]
- Film Screenings
- Football Focus

Contributors

- TwickerSeal
- Graeme Stoten
- Marble Hill House
- Simon Fowler
- Richmond In Europe Association
- Sammi Macqueen
- Alison Jee
- MarkAspen
- Doug Goodman
- World InfoZone
- Shona Lyons
- Bruce Lyons
- Richmond Film Society
- James Dowden
- Brentford FC
- RFU
- LBRuT
- NAO

Editors

- Berkley Driscoll
- Teresa Read



18th December 2020



TickerTape - News in Brief

Grants given to help community centres reopen

Six community centres run by local charities have been awarded grants to help them purchase PPE and other items to help them be Covid-safe when they open.

Six local centres applied and have subsequently been granted funding. This includes: Cambrian Community Centre, Castelnau Community Centre, ETNA Community Centre, Greenwood Centre, Mortlake Community Centre and Whitton Community Centre.

Rapid flow testing rolled out to high priority wards

Residents living in **Heathfield, Hampton North** and **West Twickenham** wards are being invited to apply for an asymptomatic COVID-19 test, for people not experiencing symptoms, as part of the Council's strategy to identify more positive cases, reduce the spread of infection and protect lives and livelihoods.

You can only book a test if you do NOT have any COVID-19 symptoms and live in Heathfield, West Twickenham and Hampton North:

If you have access to the internet, visit the [Book a lateral flow test](#) page.

If you do not have access to the internet, call 020 8891 1411

Care workers across the borough to be recognised with Dignity in Care Awards

Care workers across Richmond upon Thames are to be recognised for their incredible service to the local community and their continued support for vulnerable residents throughout the COVID-19 pandemic.

As part of the Council's role as a Dignity Champion, local care workers and personal assistants who go the extra mile to provide outstanding care and support to our residents are championed. Due to the ongoing COVID-19 pandemic, this year it has not been possible to host an in-person Dignity in Care Awards ceremony.

However, in recognition of the work of the sector and the care and support given to vulnerable residents in our care homes, home care and day care settings during this period of the pandemic, the Council will be sending hampers and personalised Community Heroes 'Dignity in Care' Certificates of Appreciation to all carers in the borough working in care homes and home support agencies.

Find out more about the [Dignity in Care Awards](#).

Meet Richmond Park's Shire Horses

There's an opportunity to meet the Shire horses up close. The annual Winter Rides in Richmond Park are now taking bookings.

There are also regular 'Meet the Shires' experience days, where you can spend a day learning about and working with these fascinating horses. For more info and booking click [HERE](#)

[Visit the News page for more stories](#)



skyelectrical

Replacing your halogen recessed lights with LEDs will:

- ✓ SAVE ENERGY
- ✓ SAVE YOU MONEY
- ✓ PROVIDE BETTER LIGHTING

So...

- ✓ CALL US TODAY FOR A FREE HOME ASSESSMENT AND QUOTE

For a timed appointment please call Sky Electrical on 020 8894 1799
22 Fifth Cross Road, Twickenham, Middlesex, TW2 5LF
www.skyelectrical.co.uk

020 8894 1799
info@skyelectrical.co.uk



On Tuesday the council gave the Stakeholder Reference Group an update on the latest 'final' plans for Twickenham Riverside in a web meeting. TwickerSeal is a member of a few of the SRG groups

so was kept up-to-date of the meeting's content.

This obviously wasn't a consultation, but more a case of 'Informing' as described in the article on Arnstein's Ladder in last week's edition.

The most interesting aspect was the absolutely chaotic 'Vehicle Movement Plan'. This 'plan' allows for the daily movement of articulated lorries along the Embankment through the so called 'Event Space' (what happened to the Holy Grail of the car free Embankment?). So not only is the event space in the flood zone, it has to accommodate lorries!

And Water Lane and Wharf Lane are to become two way – while allowing for delivery/servicing parking on both roads. TwickerSeal is not convinced about the physics of having safe two-way traffic plus parking for commercial vehicles, but the council seem to have it worked out. Er, actually they haven't. Some simple questioning from SRG members quickly demonstrated that the council was far from an answer.

It also seems that a significant focus will be put on having increased commercial servicing/delivery vehicles using King Street; at least that's not a busy road so it shouldn't be a problem. For example you can see [this](#) planning application (three King Street units, including Holland & Barrett, being combined to form a convenience store/supermarket) eschewing deliveries from the service road in favour of using King Street for articulated lorries etc.

TwickerSeal lauds the council involving local primary schools in the riverside development project, he just didn't expect they would be used to design the council's traffic management plan!



Borough View By Graeme Stoten

'Pines and Needles'

Social distanced Christmas trees line the course way pathing ready for the choosing! Located at Richmond's Pool's on the Park and a local favourite, you can still choose from a broad selection of Firs to add some festive sparkle to this years Yuletide celebrations.



COVID-19

Teresa Read

From the World Health Organization this week:

“In the past week the number of new COVID-19 cases and deaths continued to rise with 70 million cumulative cases and 1.6 million deaths globally since the start of the pandemic. The Regions of the Americas and Europe continue to shoulder the burden of the pandemic, accounting for 85% of new cases and 86% of new deaths globally.”

As cases of COVID-19 rise we are preparing for Christmas; the virus will also be celebrating Christmas and New Year. Perhaps we should consider the proverb “a stitch in time saves nine”.

Cases of COVID-19

Total cases to 18 December 2020

3,746 Richmond-upon-Thames 4,564 Kingston-upon Thames 6,999 Hounslow

Countries with High Numbers of Deaths Recorded by the World Health Organization

Deaths Worldwide 1,650,348

USA 304,960

Brazil 183,735

India 144,789

Mexico 115,769

Italy 66,537

The United Kingdom 65,520

France 58,989

Iran 53,095

Russian Federation 49,151

Spain 48,596

Argentina 41,365

Colombia 39,560

Peru 36,858

Poland 24,345

Germany 24,125

South Africa 23,827

Indonesia 19,390

Belgium 18,278

COVID-19

Avoid places where the three Cs come together

Crowds, Closed spaces, Close contact

Follow strict personal hygiene advice, wear a mask
and keep indoor areas well ventilated

DO IT ALL

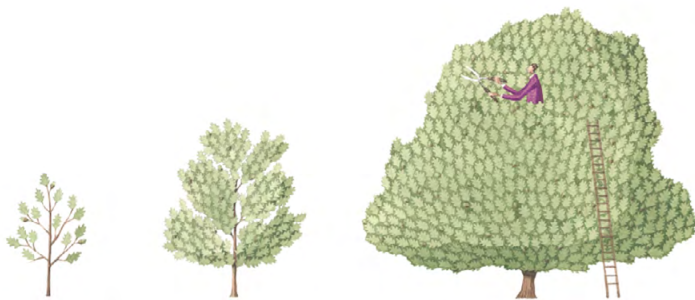
www.twickenhamtribune.com

Local COVID Alert Level - Tier 3

From Wednesday 16 December, Richmond was moved into the Very High COVID Tier. That means that local restrictions are:

- You must not meet socially indoors or in most outdoor places with anybody you do not live with, or who is not in your support bubble, this includes in any private garden or at most outdoor venues
- You must not socialise in a group of more than 6 in some other outdoor public spaces, including parks, this is called the 'rule of 6'
- Hospitality settings, such as bars, pubs, cafes and restaurants are closed – they are permitted to continue sales by takeaway, click-and-collect, drive-through or delivery services
- Schools and universities remain open
- Accommodation such as hotels, B&Bs, campsites, and guest houses must close
- Indoor entertainment and tourist venues must close, for example, cinemas and theatres
- Leisure and sports facilities may continue to stay open, but group exercise classes (including fitness and dance) should not go ahead
- Organised outdoor sport, and physical activity and exercise classes can continue, however higher-risk contact activity should not take place
- Organised indoor sport, physical activity and exercise classes cannot take place indoors. There are exceptions for indoor disability sport, sport for educational purposes and supervised sport and physical activity for under-18s
- Places of worship remain open, but you must not attend with or socialise with anyone outside of your household or support bubble while you are there, unless a legal exemption applies
- Weddings and funerals can go ahead with restrictions on the number of attendees, 15 people can attend wedding ceremonies, wedding receptions are not allowed, 30 people can attend funeral ceremonies, 15 people can attend linked commemorative events
- Reduce the number of journeys you make and walk or cycle if possible. Avoid busy times and routes on public transport. Avoid car sharing with those outside of your household or support bubble. Avoid entering a Tier 3 area, other than where necessary such as for work or education

More information about [Local COVID alert levels](#).



The Tree Agency

darryl parkin

The Treehouse
25 King Edwards Grove
Teddington, Middlesex TW11 9LY
Telephone 020 8274 0107
Mobile 07960 123580
Fax 020 8274 0119
info@thetreeagency.co.uk
www.thetreeagency.co.uk



The Tree Agency

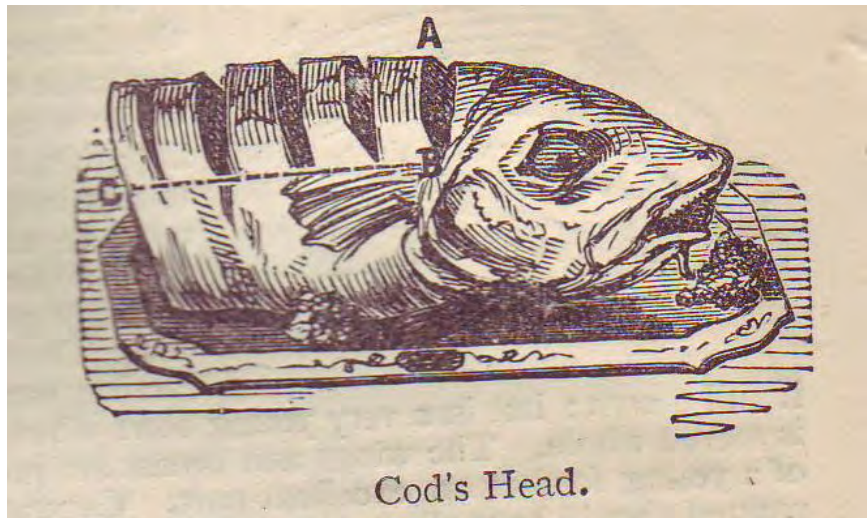
The Missing Cod's Heads

By Simon Fowler

We tend to think about Christmas as an opportunity for eating and drinking too much. But for millions of people this was never ever the case. Even in prosperous Richmond and Twickenham many families found it hard to scrape a Christmas meal together – and find it hard even today.

Minnie Cowley's memoirs of growing up in Edwardian Richmond *My Daddy is a Soldier* is one of the gems to be found in the Local Studies Library. Born in 1907, she was the daughter of Fred a jobbing plasterer, and the fourth of five children. The first Christmas she remembered was the one in 1912. Because of the winter weather her father had been thrown out of work and the family was almost destitute. On Christmas Eve Fred left their home in Raleigh Road early saying he was going to borrow a few shillings from one of his mates to buy some food. Instead, he went to the pub.

In desperation her mother sent Aggie – aged nine and the eldest child – to borrow sixpence from Grandma and then to go to the fishmonger to buy twopence worth of cod's heads and the baker for twopence of stale bread. Mrs Cowley cooked the fish and left it overnight in a covered dish on the kitchen table.



The children went to bed before Father Christmas came. Many years later she remembered that; 'Next morning, we all woke up at the same time: since four of us slept in one bed, when one moved, the others were disturbed. There was a scrabble to see what was in our stockings, and in the foot part I could feel two round things. When I tipped them out, I found an apple, an orange and a shiny new penny.' There were no arguments, her brothers and sisters had received exactly the same presents from Santa.

But overnight tragedy had struck. Somebody had broken into the house and stolen the fish: 'If a queen's jewels had been stolen the loss could not have been as great to her as the loss of twopennyworth of cods' heads was to Mum. "I hope whoever took it needed more than we did," she said to a neighbour. "If they didn't, may their fingers drop off!"

Fortunately, the neighbours rallied round. One offered to share what they had for Christmas with the Cowleys. Minnie remembered

'There seemed to be a lovely lot of things in their house – a Christmas tree with lighted candles, bonbons, dishes of fruit, some walnuts and a Christmas pudding to follow the dinner. Everyone was happy and I was glad we had been robbed, because there were so many things to enjoy in someone else's house.'

Merry Christmas!

Avoid the Three Cs

Be aware of different levels of risk in different settings.

There are certain places where COVID-19 spreads more easily:



Crowded places

with many people nearby



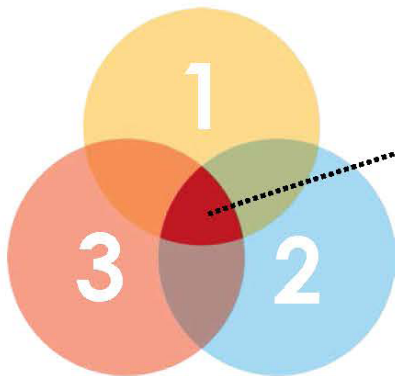
Close-contact settings

Especially where people have close-range conversations



Confined and enclosed spaces

with poor ventilation



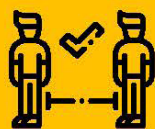
The risk is higher in places where these factors overlap.

Even as restrictions are lifted, consider where you are going and #StaySafe by avoiding the Three Cs.

WHAT SHOULD YOU DO?



Avoid crowded places and limit time in enclosed spaces



Maintain at least 1m distance from others



When possible, open windows and doors for ventilation



Keep hands clean and cover coughs and sneezes



Wear a mask if requested or if physical distancing is not possible

If you are unwell, stay home unless to seek urgent medical care.

The wonders of weeds

By Kas Rasenberg

As the nights of Christmas are approaching, I would like to dedicate a few words to the minute gifts that have grown in the woodlands around Marble Hill Park. Weeds are often termed ‘invasive’, but I think it might be time to reconsider our prior judgement.

Some of you may have noticed the wild growth of sow thistle or dandelion on a previous walk through the park. Or perhaps the leaves of *Urtica dioica* – or the stinging nettle – that have grown alongside the banks of the river. It is said that the latter of these plants are often visited by many Lepidopterans, of whom the small tortoiseshell butterfly and the ghost moth are but two of the species who seem to have a preference for this wild plant.



Nettles are a great source of food for wildlife

I have recently seen some photographs taken by Hiromi Tsuchida, who has captured the remnants of the vegetation left after the catastrophe of Hiroshima. Most of the trees are burnt and have lost their branches, but some roots have survived and from these remnants a new form of life has grown. Trees are not the only specimens capable of withstanding some of our most destructive tendencies. Weeds have often been the first to flower after we have burnt and bombed our own churchyards. It is said that species such as the rosebay willow herb – whose seeds are no larger than a particle of dust – are now widespread across the West of England, where most our charcoal has been burnt.

Peter del Tredici – one of the botanists of the Arnold Arboretum at Harvard – has written a beautiful field guide to the wild vegetation across the north-eastern region of America. In the prelude, he describes how something as seemingly insignificant as our spreading of de-icing salt upon winter roads has resulted in the development of microhabitats for weeds. Salt-loving species, native to our coasts, and calcium-loving grassland specimens have now become inhabitants of our cities. The bluish flowers of the Buddleia have grown alongside our railways and I have read that the seeds of an Albizia tree – dormant for more than two-hundred years – flowered upon a herbarium sheet at the Natural History Museum in London. It is said that the alchemy of water and fire, caused by German bombs, awakened the little specimens from their sleep.



Buddleia growing along railway lines provides nectar for butterflies

The *urtica dioica*, our ‘stinging’ nettle, has been foraged for since times ancient and the fibres of their skin have been used in textile production. Their leaves remain green when most other plants have been dried by the wind or have wilted in the sun. These little plants, moreover, reduce the temperature of the atmosphere and are capable of stabilising rivers. Nettles help to restore the soil of our degrading land. Perhaps one of our resolutions for this coming year, then, should be to welcome more weeds into our gardens. Our gift might be a little corner in which these wild plants could sustain butterflies and moths. It might, after all, not be the plants who are invasive. We might be the ones who have invaded their microhabitats with our arterial roads and factories and our burning of the land.

Christmas and New Year waste and recycling collection arrangements

Residents are being reminded that their waste and recycling collection times will be subject to change over the Christmas and New Year holiday period.

[View the revised schedules](#)

Summary of changes:

- On Monday 21 to Thursday 24 December, normal day collections will take place.
- Collections due to take place on Christmas Day (Friday 25 December), will take place on Sunday 27 December.
- From Monday 28 December until Wednesday 30 December, collections will be one day later.
- On New Year's Eve and New Year's Day – collections will be two days later.
- There will be no change for those receiving commercial waste and recycling collection services.
- Normal domestic collection schedules will resume on Monday 11 January.

Residents are asked that if they have excessive paper or card collections which cannot be deposited in their recycling containers, to consider taking this to a local street recycling site or [prebook an appointment](#) to visit the Household Waste and Recycling Centre at Townmead Road, Kew.



Garden Waste Collections will continue through until Friday 18 December 2020 and will recommence on Monday 4 January 2021.

Real Christmas trees will be collected between Monday 4 January and Friday 15 January 2021. Alternatively, you can take your Christmas tree to [various locations](#) around the borough.

Our waste and recycling teams will be working very hard to ensure Christmas and New Years' collections are completed throughout the borough but please be mindful that due to heavy workloads some collection crews may be undertaking collections later than normal. If you do need to [report a missed collection](#) this can be done online.

For more information or to order more recycling boxes call 020 8891 1411, email wasteandrecycling@richmond.gov.uk or visit the [waste and recycling](#) pages.

As the COVID-19 pandemic continues, if residents are self-isolating and feeling ill they should continue to put any potentially infected items (like used tissues or cleaning cloths) into separate plastic bags and double-bag them. These bags should be stored for 72 hours before being put in with general waste for collection.

For all enquiries about collections, please telephone 020 8891 1411.

Mieux connaître votre ville jumelle: Fontainebleau

The Richmond in Europe Association

The first on-line international exchange between the residents of Richmond & Fontainebleau took place in the presence of the deputy mayors of the twin towns. The event was hosted by ARCIF in Fontainebleau, with Christian Lequesne, the bi-lingual vice-president of ARCIF, the equivalent of REA in Fontainebleau, chairing proceedings.

After initial greetings from Evelyne Wenzel, the president of ARCIF, & Alan Mockford, the REA chairman, Judith Reynaud, the deputy mayor of Fontainebleau, & Julia Cambridge, the deputy mayor of Richmond welcomed everyone & reaffirmed the strong bonds between the twin towns.

Julia paid tribute to the sustained & lasting friendship between the twin towns. She said, "It's more important than ever to keep these ties and perhaps to tighten them and further intertwine our close & eternal bond."

Participants were then treated to a series of brief presentations in French & English by residents of both towns. These ranged from the world famous château & forest of Fontainebleau to the Anglican church which can also be found in Fontainebleau and a traditional French recipe for Christmas stars with cinnamon.

Alternate presentations from Richmond, again in French & English, included traditional English Christmas customs, pétanque in Richmond, (yes, it is played in Richmond), & a request from a volleyball club in Richmond, which is seeking a partner in Fontainebleau.

Music was provided by St. Margaret's Elastic Band. which is partnered with l'union musicale de Fontainebleau.

Please click on the following link to hear them play:

<https://www.youtube.com/watch?v=hqyRqgXuvCg&feature=youtu.be>

The event lasted just over two hours, but the time flew by &, all too soon, it was time to say adieu & to wish everyone "joyeux Noel."

However the event was such a success that ARCIF is now planning to host a similar exchange with Konstanz in the new year.



Château de Fontainebleau



Heathrow ruling 'changes nothing'

Councils opposed to Heathrow expansion say the Supreme Court ruling changes nothing and called on the airport to abandon once and for all its bid for a third runway.

Richmond and Wandsworth councils urged Heathrow to concentrate on working with the aviation industry to achieve zero carbon emissions and an end to night flights.

The ruling addresses the Transport Secretary's decision in 2018 to press ahead with giving support to expansion at Heathrow when drafting the Airports National Policy Statement (ANPS) despite the recommendations on climate change contained in the 2016 Paris Agreement.

Judges said today he was entitled to do this as the Government's commitment to the Paris Agreement setting out the emissions targets did not constitute government policy.

The Government subsequently adopted new targets in 2019 requiring net zero emissions by 2050.

Last week the Committee on Climate Change (CCC) heaped further pressure on aviation to reduce emissions. It said there should be no net expansion of UK airport capacity 'until the sector is on track to sufficiently outperform its net emissions trajectory and can accommodate the additional demand.' It further called for a net zero target for UK aviation.



The Department for Transport launched a new night flights consultation last week. At this stage it is proposing no changes to the numbers of aircraft currently arriving before 6am.

The councils also called for a complete rethink of how noise is measured so that it can fairly reflect the annoyance suffered by individual communities.

The night flights consultation runs until March 3, 2022. The council will publish its detailed response early in the New Year.

The Supreme Court agreed with Heathrow that the then Secretary of State acted lawfully when considering the impact of the Paris Agreement but confirmed that HAL would be now be bound to comply with the UK's revised carbon targets when and if it seeks to obtain planning permission for a third runway.

A group of local councils – Wandsworth, Hillingdon, Richmond upon Thames, Hammersmith and Fulham and Windsor and Maidenhead together with the Mayor of London and Greenpeace – had challenged the ANPS alongside environmental groups Plan B and Friends of the Earth.

Supreme Court ruling on Heathrow will boost international trade

Speaking after the Supreme Court judgement that ruled that Heathrow's plan for a new runway is not illegal, Parmjit Dhanda, Executive Director of Back Heathrow said: *"This is an important moment for local communities who are desperate for jobs and apprenticeships at a very hard time for our economy."*

"It is also a huge moment for the UK as it moves towards an uncertain Brexit, but now with the confidence that international trade will be boosted by additional capacity at the country's only hub airport."

Alongside our supporters in the CBI, TUC, and local communities, we see this as an opportunity to make progress, whilst also working to ensure the Paris carbon reduction targets are met as part of the planning application.



"This judgement reflects the alignment between the highest court in the land with a parliamentary majority of 296."

Back Heathrow says expansion will bring 180,000 new jobs and 10,000 apprenticeships – something the whole country will benefit from. This can be done with strict compliance to the Paris Agreement on Climate Change and investing in sustainable technology that will improve aircraft efficiency and boost the development of commercial sustainable fuels. It's crucial for the UK to now get on and build the new runway.



Eight new bird nest boxes!

The Richmond and Twickenham Royal Society for the Protection of Birds (RSPB) local group has donated eight bird nest boxes and installed them in Little Park in Crane Park.

The bird boxes will be looked after by Friends of the River Crane Environment (FORCE), a community based voluntary organisation that protects and enhances the environment of the River Crane. The boxes are suitable for great tits, blue tits, coal tits and nuthatches, and FORCE will monitor the boxes.



Cllr Julia Neden-Watts, Chair of the Environment and Sustainability Committee, said:

"I would like to thank our local RSPB group for its kind and important donation that will help protect and strengthen Crane Park's wildlife."

"Special thanks to Ian McKinnon who approached the Council with the donation and who installed the bird nest boxes. I look forward to finding out which birds end up making use of the boxes!"



Are You Dreaming of a White Christmas?

Here is a photo from Christmas Past. Like the snow, the Sycamore Tree is no more having been felled some years back. It was a haven for tree creepers, woodpeckers, redwings, song thrushes and gave so much joy to neighbours. Councillors voted unanimously to keep TPO 1046 on this MOL/Greenspace in March 2020 but unfortunately, we have seen another established cherry tree hacked away on this border and no doubt it will now be deemed damaged and permission granted to fell it; if indeed permission is actually sought. The Woodland Trust gave out small Cherry and Rowan tree

bare roots to plant which will take some years to reach the height this beautiful Cherry Tree had established and which again offered so much to wildlife here and beauty for us to enjoy. Maybe the Councillors who were at that meeting could chase up the Tree Officer to see what he has actually done in the nine months since they voted for supervision of this river corridor space as it was of such value to the community? Many thanks for those who have already registered objections to the Churchview Garages Planning Application and Appeal and you have until 22nd December to still say your piece and encourage the [Appeal Officer](#) to listen to local voices. We can but hope!

River Crane Sanctuary [Website](#) [Instagram](#)

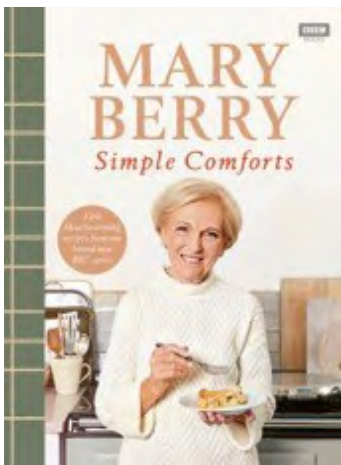


Look behind You! – Kestrel bathes in stream as we keep our respectful distance and no flash or noise photography. Live in harmony with nature.



SOME CHRISTMAS COMFORT FOOD

I'm sure many of you watched Simple Comforts back in September, the TV series with Mary Berry – doyenne of British cooking – travelling around and producing mouth-watering recipes. If you're looking for a last-minute



Christmas gift – or just treat yourself - look no further than the book from the series: Mary Berry's **Simple Comforts**. It's a celebration of the best comfort food, with fuss-free recipes that can warm the cockles and lift our spirits. And let's face it, with this Covid Christmas we certainly need that! But you'll find comfort in this collection of over 120 easy new recipes. Mary's ultra reliable recipes are great for pre and post Christmas days, when you want easy, tasty food. Return from a winter walk to the simplicity of a Split Roasted Squash with Garlic and Chilli Butter, or a warming Spicy Sausage and Red Pepper Hot Pot.

Simple Comforts features all the recipes from the BBC series, plus more, fresh from Mary's kitchen. Photographs of finished dishes accompany each recipe, with Mary's no-nonsense tips and each rigorously tested. I think we deserve to treat ourselves, and this book will lift your spirits and inspire you...the results will delight your family!

Here's a recipe from the book that's perfect for those 'Twixmas' days and it can be made in advance too. A hearty lamb stew, it's full of flavour, and perfect for feeding the family. For an extra hungry family member, just add another can of drained beans.

Braised lamb with sweet potato & haricot beans (Serves 6)

2 tbsp sunflower oil
1kg (2lb 3oz) lamb neck fillet, diced
2 large onions, sliced
4 celery sticks, sliced
1 garlic clove, crushed
1 tbsp cumin powder
1 tbsp medium curry powder
450ml (15fl oz) lamb or beef stock
1 x 400g (14oz) tin of chopped tomatoes
1 tbsp sun-dried tomato purée or paste
2 tbsp mango chutney
1 x 400g (14oz) tin of haricot beans, drained and rinsed
2 sweet potatoes, peeled and sliced into 2cm (.in) cubes
Salt and freshly ground black pepper



1. You will need a large, deep frying pan or sauté pan with a lid, or a flameproof and ovenproof casserole dish. Preheat the oven to 160 C/140 C fan/Gas 3.
2. Heat a tablespoon of the oil in the pan. Quickly fry the lamb over a high heat, until golden brown all over – you may need to do this in batches so as not to overcrowd the pan. Remove each batch with a slotted spoon and set aside.
3. Add the remaining oil to the same pan and fry the onions, celery and garlic for a few minutes. Add the spices and fry for another 30 seconds, stirring. Add the stock, tomatoes, tomato purée or paste and the mango chutney. Bring to the boil, stirring, then add lamb and season with salt and pepper. Stir for a few minutes, then cover the pan with a lid and transfer to the oven for about an hour.
4. Put the pan back on the hob and add the beans and sweet potatoes. Bring everything back up to the boil, then cover the pan again and return to the oven. Continue to simmer for a further 45 minutes or until the lamb is tender and the potatoes are just cooked but still holding their shape. Check the seasoning and serve piping hot.

Prepare ahead: Can be made up to 2 days ahead up to the end of step 3. Reheat, then add the beans and potatoes and proceed as above.

Extracted from Mary Berry Simple Comforts by Mary Berry (BBC Books, £26). Photography by Laura Edwards



The Illuminated Garden

West Green House, Hartley Wintney, until 30th December

Juxtaposing winter and light may seem at first to create an oxymoron. But midwinter is time of hope, a time to look forward to days lengthening and sunshine returning. The Romans had Saturnalia, the Chinese have Dongzhi and St. Lucia's Day is celebrated across the Nordic countries. We all await light returning after the winter solstice, and Christmas celebrates Christ's coming as the Light of the World.



This feeling is picked up in all then illuminated visitor gardens. Surely though, none can be as charming as the wonderland of the gardens at West Green House, captivatingly lit in the chill of a dark December night. As twilight falls, a short flip from Tier 3 via M3, and there is world a million miles away from 2020's tribulations, a place where Covid seems, well ... light years away.

From the moment you enter, you walk into a fantasy world. A pair of glowing Chinese dragons flank the path and then the magic begins. Little elves are glimpsed in the trees, and peering into a grotto almost hidden just off the path, I could swear I saw a fairy run past. I am already getting carried away, so I fortify myself with a hot chocolate with marshmallows and cream from a handy booth in the woods.

Under a pergola decked with stars, we are astounded by the signature image of West Green's *Illuminated Garden*, lotus flowers. Here there are a trio on a gigantic scale, towering above us, silent in the sky. And soon we are to see more, floating on the lake. But first we zig-zag across the Five Bridges, red and blue shimmering tunnels. A starburst array of shooting stars falls from heaven, and we are in the Fountain Garden.

The Fountain Garden has a more sophisticated mood. The booth here offers waffles and prosecco, so we know that it is more sophisticated. Here too we are reminded of West Green's summer role, as a country house opera venue, indeed its *raison d'être*. Tonight though the dinner jacket and bowtie are swapped for thick overcoat and heavy scarf

Read Thomas Forsythe's review at www.markaspen.com/2020/12/18/illm-garden

Photography by West Green House



TRAVELLER'S TALES 86

ROCK SOLID



Doug Goodman suggests Gibraltar for a great short break

After reading last week's piece on Gibraltar by Bruce I was tempted to delay the publication of my own feature on The Rock, which I had written a few weeks ago. However, Gibraltar is such a fascinating place with many happy memories for me that I thought a second item would help promote a great destination.



The Rock



Rock Climb



Governor's Palace



Spain to the Left

December 15th was the anniversary of the opening of the border between Gibraltar and Spain in 1982, after 13 years of isolation and lock down by the Spanish government. Tourists and vehicles were unable to cross the border until the final lifting of all restrictions in 1985. It caused great hardship as food had to be brought in by ship and plane from the UK; fresh fruit and vegetables were in short supply and Spaniards, who worked in Gibraltar, were unable to carry on. At that time I was promoting Mediterranean holiday destinations through my job as head of PR for Thomson Holidays and The Rock was an important part of the year-round short-break programme. The day the border opened was a memorable event and TV gave lengthy coverage to it – especially to the very first vehicle through the frontier. This vehicle, with a coach party from The Costa del Sol, had Thomson Holidays plastered all over it. Quite how Gibraltar's leading holiday company and agent for Thomson, Parody Tours, managed this feat I do not know.



Border with Spain



Cable Car to the Summit



Top of the Rock



Local Resident

ROCK OF AGES

Gibraltar is so full of military history that you can easily trip over a cannon ball or bump into one of the many guns erected to defend the territory. The treaty of Utrecht, a series of peace treaties signed by the belligerents in the war of the Spanish Succession in 1713, stated 'the Catholic King yields to the crown of Great Britain the full and entire propriety of the town and castle of Gibraltar together with the port, fortifications and forts thereunto belonging: and he gives up the said propriety to be held and enjoyed absolutely with all manner of right

for ever, without any exception or impediment. And they are still trying to take it back! In the referendum of November 2002 98.97% of the population voted against sharing British sovereignty with Spain.

The summit is at 1400 feet and you can walk or take the cable car. Views across the Straights to North Africa, across the Bay to Algeciras and north into Spain are spectacular. Everywhere in the two and a half square miles of the territory is easily reached and there's a coastline of seven and a half miles. Battlements are prominent and guns dating from the Crimean War to WW2 can be spotted. The most spectacular is the 1879 100 ton gun, the largest cannon ever built. With a range of eight miles, loading of 17.72 inch shells by steam power and able to fire one shot every four or so minutes, it was indeed a mighty deterrent. The O'Hara battery of 9.2 inch guns atop the Rock could hit any enemy surface vessel sailing between Gibraltar and North Africa during WW2.



Caleta Bay



Great Shopping



Defending Gibraltar

FAMILIAR ATMOSPHERE

In the main shopping street it's easy to imagine you are in the UK: policeman in familiar uniforms, red letter boxes, well-known high street shops, pubs and restaurants serving British beer and food create friendly surroundings. Spirits, tobacco and electronic goods are extremely cheap. The language spoken by most of the 34,000 residents is English with a few strange words thrown in. Key sites are the Governor's Palace, St. Michael's Caves with a cathedral-like chamber and lake floodlit to perfection, the macaque tour, (but watch out because the Barbary apes will snatch anything you carry), tours of the WW2 tunnels, (an underground city in wartime), bird watching and dolphin spotting trips. If all these activities exhaust you in the year-round warm weather you can relax in the Alameda Botanical Gardens, sit on the terrace of the famous Rock Hotel with a gin and tonic and gaze at the ships anchored in the Bay. I've spent several hours in the Trafalgar Cemetery where many of Nelson's crew are buried after the great sea battle. The epitaphs on the grave stones are fascinating

My favourite hotel is The Elliott in the city centre. The bar is a popular meeting place and the heated pool on the roof is a perfect sun trap. In Caleta Bay you'll find clean sandy beaches and the four star hotel with the steep side of The Rock as a back-drop and the sparkling Mediterranean at the front. Gibraltar is a three hour flight from the UK and if you arrive with hand luggage only it's quick and pleasant to walk to the centre. Keep an eye open for the red light as you walk across the runway: this means an aircraft is about to land or take off.

The Rock Bus tour arranged by Parody Tours, (www.parodytours.com), is an excellent way to get your bearings. The company can book accommodation, visits to all the popular sites as well as trips to Spain and across the sea to Morocco. The Rock is sometimes referred to as 'a little bit of England in the sun', but it's so much more than that as you'll discover. At present there are no quarantine regulations on entering Gibraltar and returning to the UK.

PUT YOUR TIERS BEHIND YOU!

By Bruce Lyons

That's right folks. Now is the time for positivity. Ever since Covid-19 graced our shores we have all been in a downward spiral. And now we have arrived at Tier 3!

Well, dear reader, all is not lost there are beacons of light popping up all over the place and whilst it maybe a while before normality returns, everybody is pulling together to get there.

The Travel Industry has rallied to put Covid-19 protection in place to help you plan ahead and book with confidence though might doubt this on the Eve of the Christmas holiday.

You can, and many are, book holidays with confidence for next Easter, Spring and Summer with the comforting thought that were the FCO to change their advice from OK to go to "only essential journeys" you can cancel and get a refund or defer the date without financial loss.

So, as of now, we are seeing a surge of interest in getting summer sorted, and there are good prices out there, so over the coming holiday may be a good time to investigate

Winter Sun? Since October some corridors have opened and some have proved resilient especially those to the Caribbean and Indian Ocean. So for now there are holidays on offer to the Seychelles, The Maldives and the UAE (Dubai and more) and soon to come should be Sri Lanka (corridor OK's) but country not opened by host- like Vietnam & Laos.

All likely to be opened in the New Year and similarly Mauritius. The advantage of well-established corridors is that the hot country has had time to review its protocols and disciplines with the result that many of these existing have now a "free to roam" with varied policies on wearing masks and other requirements.

Then we have had Christmas with all the usual haunts that have been barred to us; European Christmas Markets, River Cruising, Santa in Lapland, The Northern Lights and even Skiing in the Alps, but you can now "book with confidence" for next year!! Here is one such modest offer for December 2021 –

Till now even the Half Term Feb ski week looks in doubt as most of the resort have been barred from opening their lifts and other infrastructure, though we may hear more on that in the New Year, however the ski tour companies are already selling Feb School break in 2022 and just after Christmas you should be able to choose from a choice of offerings, don't delay as this is a very strong market with dedicated skiers and always fills early!!

So my message for holiday travel "Don't delay" book today – with confidence and you will get fantastic service. Happy Christmas all and leave your tiers behind you.

CrusaderTravel
020 8744 0474 Escapology Experts
crusadertravel.com info@crusadertravel.com

WINTER 2021
VERONA

Monday 13th December 2021
Departing From London Gatwick

3 Nights
from
£279
per person

Includes
Return flights to Verona with small hand luggage*.
4 Star centrally located hotel.
Twin or double room including breakfast.
Enjoy the spirit of Christmas in Verona and it's traditional Italian Christmas Market. Plus, we have included a standard class day return rail ticket to Venice.

CrusaderTravel Escapology Experts
020 8744 0474 info@crusadertravel.com
Twickenham Family Business
Established 1966

CrusaderTravel



020 8744 0474

crusadertravel.com

Escapology Experts

info@crusadertravel.com

1 –4 Jan from Gatwick or Heathrow 3 nights
B&B @ the Caleta Palace from £385 p.p
All Bookings get a FREE GUIDE!



WIZ Tales - Christmas [Past] in the UK

Teresa Read



Next Friday the Tribune will be published on Christmas Day and I am reminded of a description of Christmas in the UK, published in the World InfoZone project "Linking Our World" - a collaboration of over forty schools from around the world.

The project was a virtual exchange of information by teachers and children of where they lived and about their daily lives.

"Linking Our World" was invited by the Comite di Roma and the City of Stockholm on various occasions to attend exhibitions and ceremonies recognising innovative projects in the first decade or so of the use of the internet for global communication.

An email contribution from the UK sharing information about traditions

Christmas in the UK starts in the shopping centres in early November. Before long, lights and decorations appear in the shops, in the streets, and eventually, inside and outside people's houses. Christmas trees also materialise, along with men in Father Christmas (Santa Claus) suits.

Christmas trees became part of Christmas in the UK from Queen Victoria's reign. Queen Victoria was married to the German prince, Albert (Saxe-Coburg & Gotha) who popularised the German tradition.

Holly and mistletoe are traditionally used in Christmas decorations; both were originally plants which played a part in the Celtic Druid religion, before Christianity was introduced. Holly was used to ward off evil spirits and mistletoe was a sacred plant to the Druids. Today the spiky holly leaves symbolize the crown of thorns used in Christ's Crucifixion and the berries symbolize his blood. Kissing under the mistletoe is a Christmas tradition.

Before Christmas, people send one another Christmas cards, and in schools teachers make red post boxes decorated with cotton wool "snow". At the end of term children receive their cards and presents from their friends, and parents are invited to watch Nativity plays about the birth of Jesus and sing Christmas carols, such as "While Shepherds Watch Their Flocks by Night" and "Oh Little Town of Bethlehem". Other popular songs at this time include "Rudolph, the Red-Nosed Reindeer", "The Twelve Days of Christmas", "Silent Night", "So This Is Christmas" and "White Christmas".

Christmas films are shown on television including versions of Charles Dickens' book "A Christmas Carol". Ebenezer Scrooge, the main character in the story, hates Christmas until he is visited by the three ghosts of Christmas Past, Christmas Present and Christmas Future. The animated film "The Snowman" is also very popular and features the song "Walking in the Air".

A number of people attend church services and Midnight Mass on Christmas Eve. Christmas in the UK is celebrated on 25 December although there is debate among scholars as to whether this is really the correct date of the birth of Jesus. The Eastern Christian Church celebrates Christmas Day on 6 January, which in the UK is the day following "Twelfth Night".

On Christmas Day, people exchange gifts and children open presents which have been left by Father Christmas in their "sacks"; sometimes these are pillowcases which hold more than Christmas stockings! Children leave carrots in their sacks for the reindeer which pull Father Christmas' sleigh and quite often Father Christmas is left a Christmas mince pie.

On Christmas Day there are plenty of nuts, fruit and chocolates around and lots of different drinks. Christmas lunch is traditionally roast turkey with sage and onion stuffing, chestnut stuffing, sausages, roast potatoes, Brussels sprouts and other vegetables with gravy. This is followed by Christmas Pudding which used to be called "plum pudding" and is now full of raisins, currants, sultanas, nuts and cherries. It is served with a variety of toppings such as custard, cream and brandy butter. Before the Christmas Pudding is carried to the table it is often covered with brandy and set alight. Christmas crackers (or "bon bons") are also on the table. These are decorated tubes containing paper hats, jokes and small presents. A cracker is pulled by two people, and makes a bang; the person with the longer part of the cracker wins the contents.

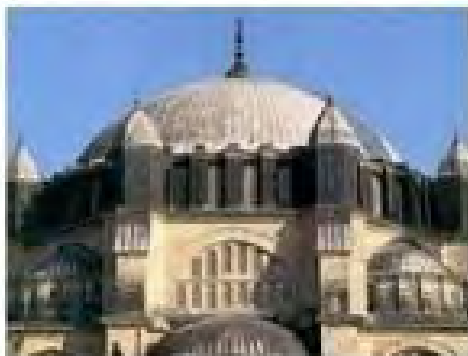
Later in the day, people continue to eat a variety of foods including Christmas cake (a fruit cake with marzipan and icing sugar) and Yule Log (a chocolate roll covered in chocolate icing sugar and decorated with a piece of holly). Those who have open fires burn logs and sit around the fire. The tradition of the Yule Log goes back centuries when burning a Yule Log was supposed to ward off the devil.

Some people go for a walk, others have parties and some visit pantomimes, a great British theatrical tradition. Pantomimes are loved by old and young. The story is often a children's tale like "Aladdin", "Cinderella" and "Jack and the Beanstalk". There is always a happy ending but along the way we meet a villain and usually two "dames" who are men dressed as women. Pantomimes have lots of audience participation and comedy as well as beautiful scenery and dancing.

Outside the weather is usually cold; recently there has not been snow at Christmas but people always hope that Christmas will be white.



*Hello, Kohomada, Merhaba, Chao Ong, Molo, G'day, Annyong Ha Shimnikka,
Shalom, Dobar Dan, Konnichiwa, Magandang umaga, Salaam Aleihum*



Each photograph is from a different country. Can you match the greeting to the picture from the WIZ Galleries?

<https://worldinfozone.com/features.php?section=sMenu>

SORRY MR HANCOCK WE ARE STILL HERE!

By Shona Lyons

Looks like Church Street is a bit like “The Windmill Theatre” as it never closes!
Our Trees are up lit above the Shops, the Overhead Christmas lights are on but in true Tier 3 style we have lost our pubs and restaurants although we still have take-away though.



For take-away eateries try Rosie Chai, Snax, Corto, Twickenham Tandoori, Tsaretta Spice, Naz Balti Pulcinella, Masaniello and more and drinks (Ricardo`s and Brewery Market), all the shops, Allissias Attic, Mojo, Miss Pretty London & Sweet Memories are here too for your Last minute Xmas shopping:

We also have great Hair Salons like the new Piper Violet, Jimmy

Marums and the well-established Mint, Cosmetics & Beauty. Treatments at Kiss N Makeup and Sheer Laser & Mint too, Fashion at Rocc, Pet Grooming and animal gifts at Bazil & Ruby, Vinyl Records at Eel Pie Records, South African treats at Limpopo, Flowers, Christmas Trees and Plants at The Bloomery, Estate Agents (that`s a good present) with Milestone & Collis and Madison Brooks and of course a working travel agent with Crusader Travel and a real Italian Deli at Corto and last but not least a Vape Shop at the Vape Shack.



Have a happy Christmas everyone for all of us here in Church Street.

Petitions

Stop the introduction of parking charges in Richmond Park and Bushy Park

The Royal Parks intend to introduce car parking charges in Richmond Park and Bushy Park. This is an indefensible proposal, particularly at a time when the link between poverty, obesity and poor health has been so clearly highlighted by the impact of Covid 19.

Spending time in the park is one of the very few free and healthy options for families and individuals. It is essential for people's mental and physical well being that access to the parks is encouraged rather than restricted. If, as a society, we really want to fight obesity we must continue to provide spaces for free and healthy exercise.

During lockdown, a much more diverse and geographically widespread group of people discovered the joys of Bushy and Richmond Park; this is a cause for celebration and should be viewed as a positive and healthy development and encouraged as much as possible. The petition can be viewed [HERE](#)

Accept the proposal to reinstate a Lido on Twickenham Riverside

During consultations with local stakeholders it has become clear that there is a wish to bring back a Lido on Twickenham Riverside.

A Lido on Twickenham Riverside would provide a leisure and sport facility for the people of Twickenham and surrounding areas.

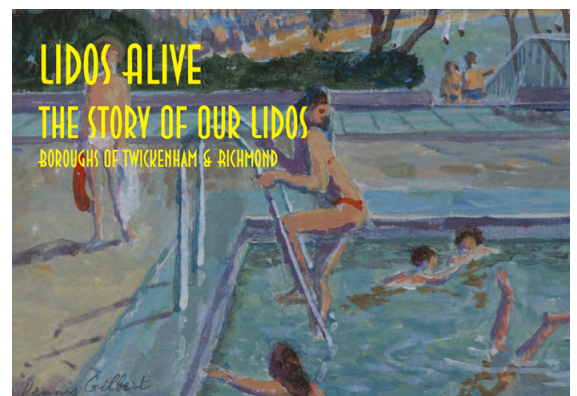
More importantly though, it provides the local people with an everyday escape from modern life, an accessible urban retreat.

Such a facility on Twickenham Riverside would act as a Magnet and contribute to the rejuvenation of the town. The petition can be viewed [HERE](#)

An Ideal Present for just £6

Lidos Alive – the Story of Our Lidos - is a 63-page A5 book with colour photos and illustrations full of interesting information about the history of outdoor swimming in the Borough and the rise of the lido. Contents include Mereway Bathing Place, pools in Bushy Park, Hampton Pool, Teddington Pool, Hampton Wick, Tagg's Island, Marble Hill, Twickenham Baths, Pools on the Park and other interesting stories.

To purchase a book contact info@TwickenhamTribune.com





RFS The Best of our Recent Historic Screenings

Issue 39

18th December 2020

A VERY LONG ENGAGEMENT

A new series for those of you who are missing Richmond Film Society's screenings or, indeed, trips to the cinema generally as a result of the COVID-19 crisis. Their committee is producing a number of weekly recommendations of films screened during the last 20 years that were extremely well received by their audiences. Should the notes reproduced below entice you to try and catch-up with this recommendation, then you should be able to do so, as it is available on streaming services and for purchase as DVD/Blu-Ray discs from the online retailers as indicated below.

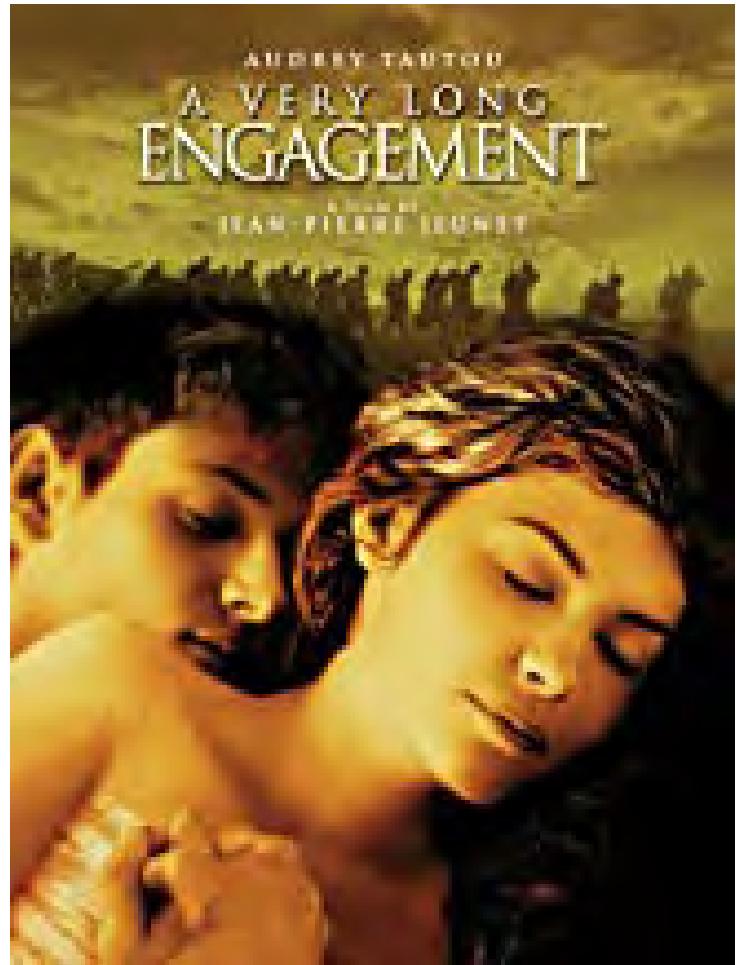
RFS Context: **A VERY LONG ENGAGEMENT** was 696th film screened by RFS on 16th October 2012. **A Very Long Engagement** was the fourth ranked film of Season 50, it got an approval mark of 93% from those attending; from season 50 we have also already featured its top three ranked films **Monsieur Lazhar**, and **The Source** and **Bienvenue Chez Les Ch'tis**, as **Issues 1, 10 & 33** respectively). **A Very Long Engagement** can be streamed from Amazon Prime and the discs are available from Amazon and others.

A VERY LONG ENGAGEMENT (Un long dimanche de fiançailles)

Country: France/USA, 2004
Director: Jean-Pierre Jeunet
Screenplay: Sébastien Japrisot, et.al
Language: French
Editor: Hervé Schneid
Music: Angelo Badalamenti
Cinematography: Bruno Delbonnel
Running Time: 127 min., colour

Leading Players:

Audrey Tautou (Mathilde)
Gaspard Ulliel (Manech)
Dominique Pinon (Sylvain)
Chantal Neuwirth (Bénédicte)
André Dussollier (Pierre-Marie Rouvières)
Ticky Holgado (Germain Pire)



This movie is PURE POETRY. I'm not going to claim I'm some great movie buff although I've seen a fair amount of movies, mostly independent and foreign, but **A Very Long Engagement** is one of the best I've ever seen. The whole film has a very dreamlike aura to it and the colours are great.

The subject matter here isn't my forte by any means but when I read the comparisons to **Saving Private Ryan**, I winced a bit. SPR is a great movie, no doubt, but it's just not my cup of tea. What makes this such a strange paradox is that the war scenes in **A Very Long Engagement** are possibly even more graphic and outrageous than those of SPR, but it works just because Jeunet adds his surreal touch to everything. Of course, I would certainly call this a romance themed movie much more than a war themed movie, but it blends everything very smoothly and naturally. It is a film both men and women will enjoy equally. You really have to see this movie. I mean, I was simply floored. The two and a half hours flew by, not a single dull moment in the entire film.

A few things: Someone mentioned earlier that this movie starts off by throwing out a lot of names and it can be very confusing if you, like me, aren't the best at remembering all these names (especially French names), but it seems the director figured that this confusion might occur, so as the movie progresses it's almost impossible to not eventually remember who is who because we are reminded so often (especially with flashbacks) of who is who. It's really not a big problem at all, just try your best to remember the names and which faces they belong to (Americans with no attention span?? Ed sorry!)

Another thing, I found it sort of hard to really care much about the relationship between the two main characters at first simply because Audrey Tautou's character is all alone wondering about her fiancé, but as the movie goes to periodic flashbacks of the two in youth, then in their teenage years, I saw so much beauty in it all. And the way these scenes unfold are incredibly spellbinding... Easily putting anything from **Amelie** to shame. That's another point I wanted to make. Jeunet's style seems so much more natural and mature here as compared to the somewhat forced 'weirdness' (or quirkiness) of **Amelie**. This is such a masterful film. If I hadn't seen the last showing of the night I would have seen it again tonight.

The ending was mesmerizing, paralyzing, and when the credits came on not a single person even got up for a few minutes. I left the cinema and walked around just thinking about it all. I can't say enough great things about this film. And in the event Mr. Jeunet sees this, thank you! Truly a film I'll think about for a long time to come, and one I'll be recommending to everyone.

If you're looking for a full length, meaty film to sink your teeth, heart and brain into for a night and walk out of the theatre feeling completely full and satisfied, this is the film.

After IMDB



BRENTFORD FC

Bees unbeaten run continues against 10 men Forrest

Nottingham Forest 1 – 2 Brentford

Goals from Henrik Dalsgaard, Josh Dasilva and Ivan Toney gave Brentford a comfortable win at the City Ground as the Bees made it 11 games without defeat in the league.



A header inside the opening 15 minutes from Dalsgaard got the Bees up and running and although the better side for large parts of the contest, the victory was only secured late on. Dasilva scored his second of the season with a lovely curling strike and then Toney scored his 15th Championship goal of the season, as he went clear at the top of the league goalscoring charts. In injury time Anthony Knockaert was dismissed for Forest following a second bookable offence.

Brentford have been a difficult side to beat of late and got off to the perfect start when an early corner led to their first goal of the evening. Mathias Jensen's right footed delivery was delivered at pace to the near post and Dalsgaard escaped from his marker to glance the ball past Brice Samba.

The Bees continued their good start and Samba had to be called into action for the home side to deny Bryan Mbeumo. Tariqe Fosu dribbled down the right wing and delivered a low cross that was cut out by Joe Worrall, but only as far as Mbeumo. On the half-volley the Frenchman drove the ball low at goal and Samba did well to get down low to his left hand side and divert the ball around the post.

Emiliano Marcondes then crossed from wide on the right hand touchline to Toney who acrobatically volley narrowly over the crossbar, as Brentford's crosses and deliveries caused problems for the Forest backline early on.

The home side, who have struggled this season, did forced David Raya into a couple of saves inside the first-half. Sammy Ameobi broke with pace into the Brentford box and his powerful shot had to be beaten away by Raya. On the follow up Harry Arter volley the ball into the ground, taking the sting out of the shot, and Raya gathered easily. Lyle Taylor then volleyed wide after a Arter free-kick had been headed out by Vitaly Janelt.

The Bees went close to doubling their lead after the interval when Rico Henry took advantage of the space afforded to him of the left wing. His cross found a Brentford shirt in the form of Fosu. After taking a touch with his right foot, Fosu then fired in a dangerous shot with his left, but Bamba was equal to it and got a hand to palm the ball away.

Nottingham Forest thought they had equalised through Knockaert after the striker curled the

ball into the bottom left corner but their celebrations were cut short after Tyler was adjudged to have interfered with Raya's line of sight while standing in an offside position and the goal was chalked off.

It was however Brentford who scored the next goal on the night after capitalising through a quick counterattack. A pass from Miguel Ángel Guerrero was intercepted by Mbeumo who broke at pace up field, before playing the ball onto Sergi Canos of the left hand side of the pitch. Canos then showed excellent vision to find Dasilva in space with a pass via the outside on his boot. Dasilva then faced Ribeiro Dias one-on-one and feinted inside the Forrest player, before curling a delightful strike into the top corner.

Brentford then put the game out of sight two minutes from time through the familiar source of Toney. A long clearance up the pitch from Janelt appeared innocuous but Toney took advantage of slight hesitancy at the back for Forrest between Samba and Tobias Figueiredo, to toe poke the ball into the back of the net.

Deep into injury time Knockaert was sent off for a second yellow card. The forward had been cautioned earlier on in the half for a late challenge on Henry and was arguably lucky to still be on the pitch after later kicking out at Janelt. As it was with the clock deep into red he received his second yellow card and thus a red after diving in the box, following a challenge with Henry. Brentford saw out the remaining injury time with the man advantage to secure all three points.

10 man Bees show fight to claim point from Hornets

Watford 1 – 1 Brentford

Brentford fought back from a goal down to claim a point from high flying Watford, despite having been reduced to 10 men. The home side had taken the lead on the hour mark from the penalty spot as Troy Deeney tucked home as spot kick as Ethan Pinnock was dismissed for a foul of Ismaila Sarr. However, in a thrilling three minutes spell the Bees hit back immediately, once again via a penalty from Ivan Toney, as a valuable point was secured to continue their unbeaten run.

The home side, playing in front of fans at Vicarage Road, produced the first chance of note in the game when a kick up field from Ben Foster was initially flicked on by Deeney. Deeney's flick on was in turned headed down by Ken Sema back into the path of the Watford captain who returned the ball to Sema once more, who drove into space on the right wing. Sema crossed towards Sarr in the box, who turned Mads Bech Sørensen and shot, but David Raya got down quickly to save.

Brentford were unlucky to not take the lead in the first-half when Toney was denied by the woodwork. Patient build-up play saw Sørensen play the ball out from defence to Mathias Jensen who found Toney dropping in between the Watford defence and midfield. The Brentford forward then dribbled towards goal and curled the ball toward the top corner but was unfortunate to see his strike comeback off the post with Foster well beaten.

The defining moment of the game came in the second-half when an inch perfect through ball from Jeremy Ngakia set Sarr away and after slight contact with Pinnock in the box, the Watford striker went to ground and a penalty was awarded. Things were compounded for the Bees as

Pinnock was then showed a straight red card for the denying of a goal scoring opportunity. Deeney struck the resulting penalty low down the middle and despite David Raya getting a touch to the ball, he couldn't keep it out as the homes side took the lead.

Their lead last three minutes however as Brentford were awarded a penalty at the other end after Christian Kabasele was adjudged to have handle the ball following an attempted strike by Mathias Jensen. Toney then stepped up with his now trademark ice-cold run up to send Foster the wrong way and level up the scores.

Watford then went close when Sema received the ball in the final third and played the ball onto Sarr. Sarr cut inside and feinted to shoot before passing to James Garner in the centre of the pitch. Garner waited for the overlapping run and as Ngakia advanced from fullback, slid the ball through into space. Ngakia pulled the ball back and after a miscued clearance from Vitaly Janelt, Tom Cleverly had a shot that pushed around the post.

Late on Watford thought they had snatched all three points when Sarr's cross was turned it at the near post by Stipe Perica but the raised linesman's flag ensured that the Bees would leave Hertfordshire with a share of the points.

UP NEXT FOR BRENTFORD

Game 1

Opponent: Reading (H) Saturday 19th December 15:00 Brentford Community Stadium

Nickname: The Royals

Competition: Championship – Matchday 20

Manager: Veljko Paunović

Opponent record: P19 W10 D3 L6 GF29 GA23 (5th in Championship)

Interesting fact: The club holds the record for the number of successive league wins at the start of a season, with a total of 13 wins at the start of the 1985–86 Third Division campaign and also the record for the number of points gained in the professional league season with 106 points in the 2005–06 Football League Championship campaign.

Game 2

Opponent: Newcastle United (H) Tuesday 22nd December 17:30 Brentford Community Stadium

Nickname: The Magpies

Competition: EFL Cup Quarter-final

Manager: Steve Bruce

Opponent cup record:

- Round 1: 1-0 Blackburn Rovers
- Round 2: 7-0 Morecambe
- Round 3: 1-1 Newport County (4-5p)

Interesting fact: In December 2012, the club announced that it had become the world's first carbon positive football club

Come on you Bees!

Hampton & Richmond Borough

Anderson recalled by Weymouth Hamp

Central Defender Myles Anderson has been recalled by National League following a two month loan spell at Hampton & Richmond Borough. The defender made eight appearances for the Beavers during his time at the Beveree, winning six and losing two, and he departs with the full blessing of manager Gary McCann.



Speaking to club media after Anderson's departure had been confirmed McCann sought praised the defender's contribution, "I want to thank Myles personally for his contribution to our successes in the last few weeks. He came to us short of game time and short of match fitness but got up to speed very quickly. He has played a pivotal role in recent times. We will be keeping a close eye on his game time at Weymouth and let's hope our paths cross again".

Slough Town fixture rescheduled

Hampton & Richmond Borough will host Slough Town at the Beveree in the New Year after both sides agreed to rearrange the fixture for Tuesday 5th January.

The original National League South encounter was due to be played on Saturday 12th December but was postponed in line with National League regulations following a member of the management team testing positive for coronavirus.

The corresponding fixture last season between the two side back in January finished 2-1 to the visitors, after the Rebels recovered from an early Luke Ruddick to take all three points courtesy of goals from former Hampton pair Ben Harris and George Wells.

Come on you Beavers!

Gibraltar Alive: A scenic view of the Rock

92 pages of full colour photos of Gibraltar. See the Rock as you've never seen it before! Only £10

Available to collect from Crusader Travel
or contact@TwickenhamAlive.com



Brentford FC x Hounslow Community FoodBox

£850 raised and 2,100 items donated for Hounslow Community FoodBox

Brentford Football Club is proud to assist Hounslow Community FoodBox with their Christmas Appeal again this year.

Hounslow Community FoodBox has provided over 100,000 meals since the start of the pandemic, a 300 per cent increase on the usual donations, with a third of those meals going to local children.

Brentford FC has developed a strong relationship with Hounslow Community FoodBox over recent years and the players have made donations both of food and money. They have also made regular visits to support and witness the work undertaken by the team of volunteers who provide food and other essential provisions for those in need across the Hounslow Borough.

With COVID-19 restrictions making such visits impossible this year, the Club decided to assist in a different way. The Club teamed up with Morrisons supermarket in Brentford and set up a collection point for donations outside the store. Brentford FC Staff and Directors worked with fans to collect donations, with Chairman Cliff Crown and Club mascots Buzz and Buzzette among those lending a hand at Morrisons.

Over the course of two weekends at Morrisons, shoppers – and the supermarket itself – donated £850 and a whopping 2,100 items. The team of volunteers were overwhelmed at the generosity of the Morrisons' shoppers including Karen Reader, who kindly left a whole trolley full of groceries with Bees staff.

First Team players helped to wrap presents and pack hampers at the Club's Jersey Road training ground, and Brentford FC Lifeline Society donated £3,000 for turkeys and other provisions for the 150 Christmas hampers being prepared by Hounslow Community FoodBox.

Brentford FC Player Welfare Manager, Peter Gilham, said: "Brentford Football Club has always been proud to help its local community and we're doing so again this year alongside Hounslow Community FoodBox and Morrisons Brentford.

"2020 has been an incredibly challenging year – Hounslow Community FoodBox has seen applications rise fourfold – so there's a lot of people out there in desperate need. The players themselves made a substantial donation a few weeks ago, and we're asking our supporters for their backing too. Please visit the Hounslow Community FoodBox website and help support your local community."

Hounslow Community FoodBox is looking for more volunteers and donations, particularly of non-perishable items and money to help extend the service they can provide. For further information, please email info@hounslowfoodbox.org.uk. Read more at hounslowfoodbox.org.uk, and find the FoodBox on Twitter [@HounslowFoodbox](https://twitter.com/HounslowFoodbox).



Katy Daley-Mclean announces retirement from international rugby

Red Roses fly half Katy Daley-Mclean has called time on her international career with immediate effect.

The 34-year-old, who led England to World Cup victory in 2014, retires on 116 caps, having become England's third most capped player of all time in the Red Roses' autumn international against France last month. Daley-Mclean made her Test debut against Scotland in February 2007, went on to feature in four Rugby World Cups and was awarded an MBE in the 2014 New Year's Honours List for services to rugby. The South Shields-born back also won eight Women's Six Nations Grand Slam titles and played sevens for Team GB at the 2016 Olympic Games in Rio.

She earned her 100th cap in England's victory over the USA in 2018 and scored 542 points throughout her international career. Over the last 12 months, Daley-Mclean was nominated for World Rugby World Player of the Year at 33, scored a try against Wales in front of a 10,974-strong crowd at Twickenham Stoop in March 2020 and was recently named at fly half in World Rugby's women's 15s team of the decade. At club level, Daley-Mclean represented Darlington Mowden Park Sharks and Loughborough Lightning before taking on a player-coach role at Allianz Premier 15s newcomers Sale Sharks Women at the start of the 2020-21 season, a role she will continue for the remainder of the campaign.

Daley-Mclean said: *"Having had time to reflect following the autumn internationals, I have decided now is the right time to retire from international rugby. This has been a difficult but relatively quick decision and feels like the right time. I'd like to say a huge thank you to Nicky Ponsford [RFU head of women's performance] and Simon Middleton [England Women head coach] who have been great with me throughout my career and were completely understanding of my decision to retire. At Sale Sharks I have found a new home and have loved my time there so far.*

"Working with Darren Lamon and Michelle Orange, and living locally, I feel I can develop my coaching and drive something special at the club and in the region.

Becoming a parent 18 months ago was life changing. My daughter also plays a role in my decision. I don't want to miss out on these precious years with her and the calendar would have meant spending a lot of time away.

I have been fortunate to be involved in four World Cup campaigns in my career and to win one.

I am so grateful for the experiences the game has brought me. It has been a total privilege to be a Red Rose and I'll be cheering louder than anyone for Simon, Sarah and the girls come October.

I'll be the team's number one fan."

England Women's head coach Simon Middleton said: *"Katy is an icon of the game.*

The word legend is used a lot but I would tag that to her because of the consistency of her performances over such a long period of time.

The influence she's had on the women's game worldwide for England has been absolutely sensational. Katy has continually adapted and shown her versatility as a player and her technical and tactical understanding as a player to play at the level she has for so long in such a pivotal position is incredible.

People probably forget just what a good sevens player she was. She transferred her skillset from XV's to sevens which took her all across the World Series and the Olympics. I was fortunate to be able to coach her and work with her in both formats.

I've spoken to Katy at length and she's evaluated what's currently closest to her in her life.

She understands what a commitment it takes to be an England player if you want to be the best that you can be. It's a huge decision but she's made the right decision for her and her family.

Her whole career has been about doing the best for England. She's been part of a huge period of growth. She's a World Cup winner, a World Cup runner-up, has won multiple Six Nations titles. Without her, would England have been as far forward as we are in this moment in time? No. She's been as instrumental as anyone in taking the game forward and that should be recognised.

Katy is an unbelievable motivator. There are few people you'll stand in a circle with and the hairs on the back of your neck stand up when they speak. Mine do, when she speaks. She is the most passionate England player you can imagine. When she talks, people listen. She knows how to motivate a group of people. She's a captain I would have played for, without a shadow of a doubt. She knows how to get people in the right place to run through walls.

Katy will be massively missed from the programme. I dropped her a message to say working with her has made me a better coach and a better person because she asks so many questions and challenges in so many ways but the right ways. It gets you to really think about what you're doing as a coach and how you're delivering your coaching standards. She knows her game inside out.

We all wish her the very best on the next part of her journey."



Investigation into preparations for potential COVID-19 vaccines

Today the National Audit Office (NAO) reports that government has worked quickly to secure potential COVID-19 vaccines, successfully signing deals for five vaccines providing up to 267 million doses at an expected cost of £2.9 billion.

The Department for Business, Energy and Industrial Strategy (BEIS) chose to purchase different types of vaccines from a range of pharmaceutical companies, to create a diverse set of options, recognising the uncertainty over which ones, if any, might prove to be safe and effective. It originally intended to purchase up to 12 vaccines, later reducing the number to up to nine as its understanding of requirements and costs developed.

The total cost to the taxpayer of government's efforts to purchase and deploy vaccines is uncertain. The current estimate is up to £11.7 billion which includes the costs of purchasing and manufacturing vaccines for the UK, deploying them in England and investing in global efforts to purchase vaccines.

It has signed contracts with five pharmaceutical companies, providing some priority access in four out of five cases to address the risk that global demand may outstrip supply initially. Non-binding agreements are also in place with two other pharmaceutical companies.

BEIS agreed upfront payments of £914 million in the five contracts it signed, prior to any vaccine being approved by regulators. These payments have been used to start manufacturing and to support clinical trials. In all contracts, the payment will be used against future purchases of the vaccine if it is approved as safe and effective. Only one of the contracts BEIS has signed provides for the full upfront payment to be refunded should the vaccine fail to achieve regulatory approval. Two other contracts contain provisions for BEIS to recover some of the upfront payments if the contract is terminated, but for the remaining two contracts the upfront payments are non-refundable.

Many pharmaceutical companies requested immunity in the event of liabilities or legal action relating to their vaccines, meaning the taxpayer may have to pay the costs of claims against them. In four out of the five contracts agreed so far, no cap has been applied to the amount that government could pay in the event of a successful claim against the pharmaceutical companies.

Government has made changes to how investments are approved so that decisions could be made faster and to increase the chances of purchasing vaccines, reducing the time taken for investment decisions from four weeks down to seven to nine days for proposals from the Vaccine Taskforce.



As part of the Spending Review in November 2020, BEIS calculated it needed £519 million to provide UK-based manufacturing capacity for vaccines. By December 2020, it had committed £302 million of this to a range of manufacturing projects.

NHSE&I is planning a vaccination programme with high levels of uncertainty because information about the COVID-19 vaccines is constantly changing. Each potential vaccine requires different plans for rolling it out to the public because each has different characteristics. These include the temperature it should be stored at, its shelf-life once open, and how it should be prepared before it is administered. BEIS has shared the information it has about the characteristics of each potential vaccine with NHSE&I, but characteristics are still uncertain and subject to change as clinical trials continue for some vaccines.

In September 2020 NHSE&I calculated that if every adult in England needed to be vaccinated with two doses of a COVID-19 vaccine, its vaccination workload would increase by 740%. NHSE&I calculated that it may need up to 46,000 staff consisting of 26,000 vaccinators and 20,000 administrative staff to deliver the COVID-19 vaccination programme based on a 75% take-up rate. NHSE&I is continuing to keep its deployment plans under review to ensure it can respond to the latest information about which vaccines have been approved, how many doses will be available and when, which groups in society need to be vaccinated, how many doses of vaccines will be available and when and how those vaccines need to be deployed. As at 8th December 2020, NHSE&I is planning on the assumption it could vaccinate up to 25 million people with two doses throughout 2021 - combined with an expanded flu vaccination programme, this would be an increase of 64.1 million vaccinations compared to 2019-20. NHSE&I is continuing to review and update its assumptions about how many staff will be needed to support COVID-19 vaccinations in 2021.

NHSE&I has developed delivery models that take account of the range of different possible characteristics of the vaccines BEIS has bought, the different groups that will require vaccinating and regional needs. It has concluded that it is not possible to deliver both the COVID-19 and seasonal flu vaccination programmes solely through existing arrangements such as GP practices and community pharmacies. It has developed three new models including offering vaccinations at large sites such as sports stadiums; mobile sites similar to polling stations; and roving units to take the vaccine to particular locations such as care homes.

Gareth Davies, the head of the NAO, said:

“Developing and securing an effective vaccine is central to reducing the impact of COVID-19 on society and saving lives. Government has worked quickly and effectively to secure access to potential vaccines, using the available information to make big decisions in an inherently uncertain environment.

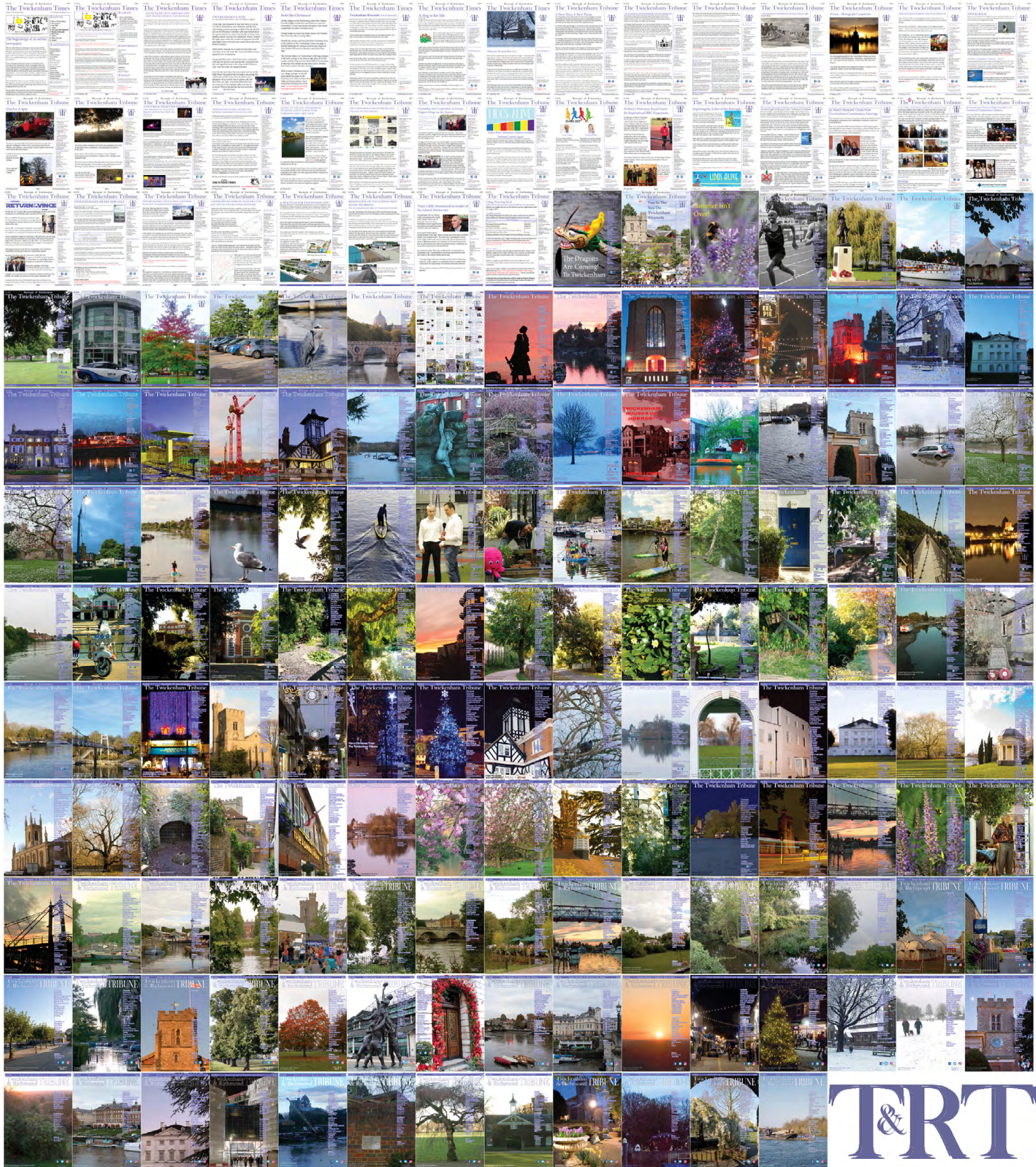
“With one vaccine now approved for use and its roll out started, significant challenges remain. Efficient delivery to the UK population presents complex logistical challenges and requires excellent communication with the public.”

View full report [HERE](#)



National Audit Office

215 editions of the **Twickenham & Richmond Tribune** online - Lots to read: News, Reviews, History, Sports and On-going Sagas in the Borough of Richmond upon Thames



Half Page

Quarter Page
Landscape

Quarter Page Portrait

Eighth Page

Eighth Page
Landscape

Example advert sizes shown above

Thousands read The Twickenham & Richmond Tribune

If you are reading this you could be advertising your business with
The Twickenham & Richmond Tribune. Community rates are
available

Contact: advertise@TwickenhamTribune.com

View ad details at www.TwickenhamTribune.com/advertise

Contact

contact@TwickenhamTribune.com
letters@TwickenhamTribune.com
advertise@TwickenhamTribune.com



Published by:

Twickenham Alive Limited (in association with World InfoZone Limited)
Registered in England & Wales
Reg No 10549345

The Twickenham Tribune is registered with the ICO under the Data
Protection Act, Reg No ZA224725

©Twickenham Alive Limited. All rights reserved. No part of this publication may be used or reproduced without the permission of Twickenham Alive Limited. While we take reasonable efforts, this online newspaper cannot be held responsible for the accuracy or reliability of information. The views and opinions in these pages do not necessarily represent those of Twickenham Alive Limited or The Twickenham & Richmond Tribune. [Terms & Conditions](#)